

Oceanis 46.1



NEW OCEANIS 46.1

SHAPING THE FUTURE OF A BESTSELLER!

LE GRAND LARGE, GIVRAND, MAY 2018



A year after the “*Oceanis 51.1 phenomenon*”, BENETEAU is still creating a small revolution in this 30-year-old line. The new Oceanis 46.1 is a superb progression of the bestselling Oceanis 45, which has been very successful worldwide and was awarded the title of “*European Yacht of the Year*” in the Family Cruiser category, in 2012. Loyal to the Oceanis yacht's reputation, she is a joy to live aboard, with a wide choice of fittings. She boasts all the features of a large yacht without sacrificing speed and the quality of her fittings are unbeatable for a boat of this size. It is no coincidence that the Oceanis 46.1 is to be premiered in Australia, a country of seasoned sailors with high standards. Join us in Sydney next August and then at the main European and American boat shows in autumn 2018.

Riding on the wave of the current generation's energetic line, the Oceanis 46.1 shares a rare balance between elegance, clever features, comfort and performance with the 51.1.

CONTACT

Julien Ferre
Tel +33 (0)6 74 22 77 16
j.ferre@beneteau.fr

WWW.BENETEAU.COM

Oceanis 46.1



PROGRESSIVE ARCHITECTURE



The Oceanis 46.1 is based on a drawing by Finot-Conq, employing the much-applauded stepped hull of the 51.1. This is a major development of the line, with a shape widening to the bow, freeing up unbelievable interior space without altering the performance under sail. The incredible amount of space on deck and inside, as well as the particularly clever choice of fittings, all in an elegant style by Nauta Design, set the Oceanis 46.1 apart.

CONTACT

Julien Ferre
Tel +33 (0)6 74 22 77 16
j.ferre@beneteau.fr

WWW.BENETEAU.COM

Oceanis 46.1



SPACIOUS AND EFFICIENT DECK PLAN



On deck, the architectural design creates a cockpit that is a great deal larger than on other yachts on the market and the spaces are skilfully distributed.

The large cockpit table is designed for up to eight people and also cleverly houses the life raft. Manoeuvres have been made much easier by grouping the winches at the helm, creating a large space to unwind on either side of the companionway – equipped with two elegant reclining sun loungers together with drinks holders. When it is time for a nap, these can easily be lifted and taken to the yacht's bow to relax there instead.

The aft of the Oceanis 46.1 hits the same note of comfort and well-being. A single step separates the cockpit from the huge swim platform, affording easy access to all the pleasures of the sea, much to everyone's delight. You will also love the plancha grill built into the aft of the helm station, allowing you to cook from the platform or the cockpit.

CONTACT

Julien Ferre
Tel +33 (0)6 74 22 77 16
j.ferre@beneteau.fr

WWW.BENETEAU.COM

Oceanis 46.1



EXTRA-SPACIOUS INTERIORS



The impressive additional space in favour of comfort and habitability can be seen in all aspects of the interior fittings.

Large hull portholes bring lots of natural light right into the heart of the boat, creating depth and elegance in the interior and providing a breathtaking view of the horizon. The interior cabinet work can be customized with a choice between brushed light oak or mahogany, and this can be extended to many of the options.

CONTACT

Julien Ferre
Tel +33 (0)6 74 22 77 16
j.ferre@beneteau.fr

WWW.BENETEAU.COM

Oceanis 46.1



The comfortable owner space features a separate shower and head and is worthy of a much bigger yacht (160 x 205 cm double bed accessible from either side).

In the three cabin version, the guest rooms aft of the companionway are the same size and strikingly bright thanks to a large hull porthole and two deck hatches. The generous ceiling height of these cabins allow a layout with bed heads facing in the same direction as the boat.

With a five-cabin offer, two galley layouts (L or lengthwise) and a wide choice of options, the Oceanis 46.1 has everything chartering companies could hope for and is set to become a standard in marinas worldwide.

CONTACT

Julien Ferre
Tel +33 (0)6 74 22 77 16
j.ferre@beneteau.fr

WWW.BENETEAU.COM

Oceanis 46.1



AGILE AND EASY TO SAIL



Designed to be accessible and easy to use, in addition to the joys of life on board, the Oceanis 46.1 also provides increased safety for all crew types. With internal diagonal shrouds and verticals on the hull side, the split rigging frees a considerable amount of space for movement on deck. Equipped as standard with an in-mast furling system and a self-tailing jib, all the halyards and sheets lead back to two winches on either side of the helm station. As for the choice of a twin rudder system with a fibre steering, it gives you greater control under sail. In addition to these main features, the different rigging plans and wide range of options mean that each sailing yacht can be customized to match its owner's identity.

CONTACT

Julien Ferre
Tel +33 (0)6 74 22 77 16
j.ferre@beneteau.fr

WWW.BENETEAU.COM

Oceanis 46.1



SPEED AND SENSATIONS

Reminiscent of Beneteau's well-known racing line, the First Line version offered on the new Oceanis 46.1 will satisfy people who love fast cruising. With a longer mast, by one metre, a sail area increased by 28%, Harken Performa racing deck fittings and a deep lead-bulb keel to reduce drag, this version will guarantee unique cruising sensations. With the addition of a composite steering wheel and a bowsprit for a large spinnaker, Beneteau's keen eye for detail sets this yacht apart from other boats on the market.

At BENETEAU, even our smallest boats benefit from major technical progress, and the Oceanis 46.1 is no exception, with the best of the 51.1, which is why we have a reputation for 'best for value'. While remaining easy to access and easy-going, she is a real pleasure to cruise and can be adapted to a wide range of sailing profiles. The Oceanis 46.1 has the style and performance of an outstanding new generation of sailing yachts and as such it is eagerly awaited.

CONTACT

Julien Ferre
Tel +33 (0)6 74 22 77 16
j.ferre@beneteau.fr

WWW.BENETEAU.COM

Oceanis 46.1



PROVISIONAL GENERAL SPECIFICATIONS

Length overall	14,60 m	47'11"
Hull length	13,65 m	44'9"
L.W.L	13,24 m	43'5"
Hull beam	4,50 m	14'9"
Deep draught (cast iron)	2,35 m	7'9"
Deep ballast weight	2 735 kg	6 028 lbs
Shallow draught (cast iron)	1,75 m	5'9"
Shallow ballast weight	3 061 kg	6 746 lbs
Draught performance (cast iron/lead)	2,65 m	8'8"
Ballast weight performance	2 576 kg	5 678 lbs
Air draught Mast 2 cross tree levels	20,31 m	66'8"
Air draught Mast Performance 3 cross tree levels	21,31 m	69'11"
Light displacement (EC)	10 597 kg	23 356 lbs
Fuel capacity (standard)	200 L	53 US Gal
Freshwater capacity (standard)	370 L	98 US Gal
Engine power (standard)	57 CV	57 HP
Furling mainsail	44,50 m ²	479 sq/ft
Selftacking jib	44,1 m ²	441 sq/ft
Classical mainsail (optional)	54 m ²	581 sq/ft
Genoa - 105% (optional)	58 m ²	624 sq/ft
Code 0	102 m ²	1 098 sq/ft
Asymmetric spinnaker	152 m ²	1 636 sq/ft

ARCHITECTES / DESIGNERS

Naval architects: PASCAL CONQ

Deck and interior design: NAUTA DESIGN

EC CERTIFICATE

A10/B11/C12

CONTACT

Julien Ferre
Tel +33 (0)6 74 22 77 16
j.ferre@beneteau.fr

WWW.BENETEAU.COM

Oceanis 46.1



PLANS



Profile



Main deck



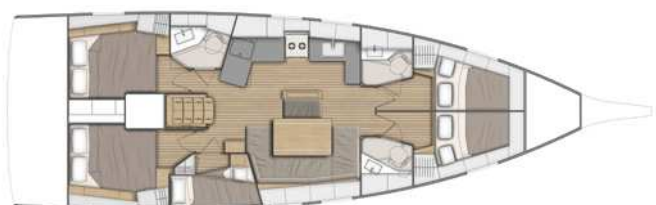
Lower deck / Bathrooms 3 cabins 2 version



Lower deck / Bathrooms 3 cabins 3 version



Lower deck / Bathrooms 4 cabins 4 version



Lower deck / Bathrooms 5 cabins 3 version

CONTACT

Julien Ferre
Tel +33 (0)6 74 22 77 16
j.ferre@beneteau.fr

WWW.BENETEAU.COM